

RoMix

MOLECULAR CEMENT DISSOLVER

THIS NEWLY DEVELOPED CONCEPT IS TOTALLY SAFE AND USER FRIENDLY!



BACK-SET™

**SAFE
AND
EFFECTIVE**

- NON-HAZARDOUS TO EQUIPMENT
- NON-CORROSIVE TO PAINT
- NON-FUMING
- BIODEGRADABLE
- ACID ALTERNATIVE
- COST EFFECTIVE

TURNS HARD SET UP CEMENT BACK INTO RINSABLE MUD!

BACK-SET IS AN ACID ALTERNATIVE WITH NO FUMES OR ODORS. THIS SAFE, BUT EFFECTIVE ALTERNATIVE IS A NEWLY DEVELOPED CONCEPT IN CHEMISTRY, **BACK-SET** MOLECULARLY ATTACKS THE PORTLAND IN CEMENT, COMPLETELY DISSOLVING THE HARDENED MOLECULAR STRUCTURE BACK INTO RINSABLE MUD! THIS TYPE OF IONIC EXCHANGE HAS NEVER BEEN USED BEFORE IN OUR INDUSTRY. THIS PRODUCT IS ONE OF A KIND!

BACK-SET DOES NOT CONTAIN MURIATIC, HYDROCHLORIC, HYDROFLUORIC, SULFURIC OR PHOSPHORIC ACIDS. THE ACTIVE INGREDIENT OCCURS NATURALLY IN SUGAR CANE SYRUP.

Toll Free: 800-331-2243

Fax: 817-685-0877

E-Mail: RoMix@sprynet.com

www.romixchem.com/backset

**RoMix**
CHEMICAL and BRUSH INC.
CUSTOM FORMULATORS • MANUFACTURING CHEMIST



SPECIFICATIONS:

BACK-SET MAY BE USED TO REMOVE CURED CEMENT, CONCRETE, MORTAR, GROUT AND STUCCO OFF VIRTUALLY ANY SURFACE WITH-OUT HARM.

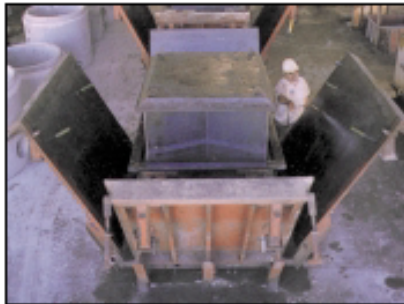
EQUIPMENT TYPE: READY MIX TRUCKS, MIXERS, VEHICLES, FORMS, MOLDS, BUGGIES, SHIP-HOLDS, TANKERS, PUMPS, TROWELS, SCREEDS, VIBRATORS, CONCRETE SAWS, SLIP FORM PAVERS, AUGERS, ETC.

Authorized Distributors:
Multicrete Systems Inc.
Unit 9-106 De Vos Road
Winnipeg, Manitoba R3T5Y1
204-262-5900



RoMix

REACTIVE • HIGH PERFORMANCE



RO-396

FORM RELEASE AGENT

MULTI-USE FORM RELEASE AGENT, NON-HAZARDOUS AND NON-DOT-REGULATED. NON-STAINING, INCREASES FORM LIFE AND SAFE TO USE!

Ready
To
Use

CHARACTERISTICS:

- ★ CLEAN, POSITIVE STRIPPING
- ★ ELIMINATES BUG HOLES
- ★ NON-REGULATED
- ★ MFG. IN U.S.A.
- ★ NON-CARCINOGENIC
- ★ HIGH COVERAGE RATES
- ★ NON-STAINING
- ★ CORROSION PREVENTATIVE
- ★ VOC COMPLIANT
- ★ NON-FREEZING
- ★ HELPS KEEP FORMS CLEAN
- ★ WORKS IN ALL TEMPERATURES
- ★ SAFE & EASY TO USE
- ★ NON HAZARDOUS
- ★ BIODEGRADABLE

RO-396 FORM RELEASE AGENT CONTAINS AN ACTIVE AGENT DISSOLVED INTO A PROPRIETARY, STATE-OF-THE-ART MINERAL OIL CARRIER. RO-396 IS SPECIALLY FORMULATED TO BE APPLIED TO CLEAN SURFACES IN A THIN FILM FOR BEST RELEASING PERFORMANCE AND ECONOMY. RO-396 IS MOST EFFECTIVE IF SPRAYED. RO-396 IS A READY-TO-USE PRODUCT, DILUTION IS NOT RECOMMENDED AND CAN CAUSE DIFFICULTY IN STRIPPING. RO-396 CAN BE APPLIED MINUTES OR DAYS BEFORE A JOB.

RO-396 MEETS AND EXCEEDS EMISSION REQUIREMENTS FOR 40 CFR PART 59 FORM RELEASE (EPA LIMIT 450G/L). RO-396 MEETS AND EXCEEDS VOC COMPLIANCE FOR THE STATE OF CALIFORNIA, REGULATION 8, ORGANIC COMPOUNDS, RULE 3, ARCHITECTURAL COATINGS (CA LIMIT 250G/L). RO-396 MEETS AND EXCEEDS ALL VOC REGULATIONS BY HAVING A VOC CONTENT • 0.74 LBS/GAL, 88.54 G/L (TEST METHOD USED EPA-24).



COVERAGE RATES

1900-2100 sq.ft./gal. - non-porous
1400-1800 sq.ft./gal. - semi-porous
800-1600 sq.ft./gal. - highly porous
*results may vary due to conditions

TYPICAL PROPERTIES:

- PHYSICAL FORM - GOLDEN AMBER LIQUID
 - SPECIFIC GRAVITY - 0.893G/ML
 - LBS PER GAL. - 7.15 • ODOR - NEGLIGIBLE
 - FLASH POINT -> 305°F • DOT CLASSIFICATION - NON-REGULATED • INSOLUABLE IN WATER
- ✓ TEST SPOT RECOMMENDED ON RUBBER AND LATEX MOLDS.

Distributed by

Authorized Distributors:
Multicrete Systems Inc.
Unit 9-106 De Vos Road
Winnipeg, Manitoba R3T5Y1
204-262-5900

 **RoMix**
CHEMICAL and BRUSH INC.

CUSTOM FORMULATORS • MANUFACTURING CHEMIST



RoMix

#1125 RX Sprayer

RoMix's #1125 RX Sprayer is designed to apply multi-type products from cleaners to release agents!



FEATURES:

- 2.5 GALLON CAPACITY
- FUNNEL TOP FOR EASY FILLING
- POLY FLOW CONTROL WITH LOCK ON FEATURE
- REINFORCED HOSE
- VITON SEALS AND GASKETS
- BRASS & POLY NOZZLES INCLUDED



#1125 RXF Foamer

RoMix's #1125 RXF Foamer is designed to apply solvers, soaps, and detergents. The thick foam increases product dwell time and cleaning effectiveness!



FEATURES:

- SAME AS ABOVE
- FOAM ENDUCTOR
- ALL POLY FOAM NOZZLE

RoMix
CHEMICAL and BRUSH INC.
CUSTOM FORMULATORS • MANUFACTURING CHEMIST
7-800-331-2243
Model 1125RX 2.5 Gallons / 9.5 Liters

 **RoMix**
CHEMICAL and BRUSH INC.

800-331-2243 TOLL FREE
817-685-0877 24 HR. FAX
www.romixchem.com

Distributed by:

Authorized Distributors:
Multicrete Systems Inc.
Unit 9-106 De Vos Road
Winnipeg, Manitoba
R3T5Y1

